

Launch Your Career with Grad Studies in Earth & Space Science

Whether you're ready to move up, stand out, or still searching for a role that reflects your skills and ambition, grad studies can help you go further and lead real-world impact.

MAKE STRATEGIC DECISIONS— NOT JUST TECHNICAL ONES

Step into leadership roles where you help shape priorities and drive meaningful change in environmental science and space exploration.

BUILD A GLOBAL NETWORK

Collaborate with leading researchers and industry partners to expand your opportunities.

GAIN INDEPENDENCE AND FLEXIBILITY

Design your research path, take on impactful projects, and grow through mentoring and teaching.

SEE A REAL RETURN ON INVESTMENT

Access higher-paying, meaningful work AI can't replace—creative, complex, and in demand.

MASTER OF SCIENCE (MSc)

- 2 years full-time (part-time available).
- Courses, research, and a thesis.
- **Entry:** Honours Bachelor's in a related field (min **B** avg): earth/atmospheric/space science, physics, chemistry, astronomy, engineering.

DOCTOR OF PHILOSOPHY (PhD)

- 4 years full-time (part-time available).
- Courses, research and dissertation.
- **Entry:** Master's in a related field (min **B** avg): chemistry, physics, mathematics, astronomy, or engineering.
- Exceptional undergrads may be fast-tracked from MSc.

RESEARCH AREAS

- Atmospheric Science
- Earth Science
- Geomatics Science and Engineering
- Planetary Science
- Space Engineering

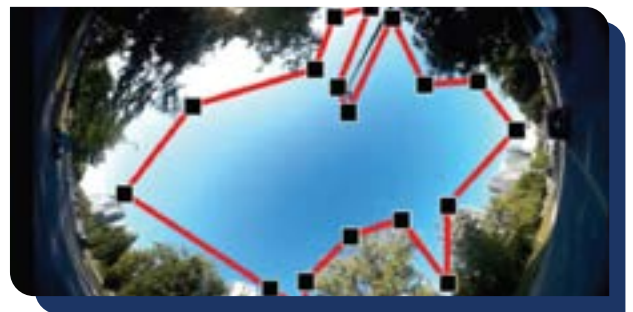
GRADUATE FUNDING

- **\$20,000–\$23,000** annual take-home after tuition.
- Eligible for awards and scholarships.

Next Steps

- Apply for **September, January, or May**
- **Contact:** essgpa@yorku.ca

➤➤ Explore faculty research,
learn more + apply



Study in **Toronto**

Enjoy the convenience of an on-campus subway stop, diverse dining, and self-contained grad housing at York's vibrant Keele Campus.

